

# DRESS CODE

## RESPONSIBILITY

Each member owes a duty to his/her fellow members to maintain standards befitting Huntingdale Golf Club and not to offend others by inappropriate dress or poor taste. Members shall be suitably attired on the course and in the Clubhouse at all times. It is the responsibility of the Member to ensure that their guests conform with the regulations of the Club.

## MENS GENERAL DRESS REGULATIONS

### Golf Course:

Clothing should generally be of a type that is designed and sold for the purpose of playing golf. The traditional dress code is collared shirt or skivvy with slacks, plus fours or tailored walk shorts worn above the knee. Shirts must be tucked into the waistband of trousers or shorts. All socks must be white, short socks may have an approved Golf Club logo on them. Long socks must be worn pulled up. White ankle socks are accepted, sockettes or no socks are **not** permitted.

Golf shoes with non-metal spikes are the only acceptable shoes to be worn on the golf course. **Metal spikes and other non-golfing shoes are strictly prohibited.**

Corporate advertising on apparel is not encouraged, however it may be permitted if it is deemed as being discreet by the Manager or his authorised delegate.

### Clubhouse:

**Bar:** Golfing attire (excluding caps and hats) with street shoes is permitted. Clean golf shoes may be worn in the Clubhouse except for the dining areas.

**Dining Room:** Tailored coat with trousers and a tailored shirt and tie, rolled neck pullover or skivvy is the accepted dress, unless a function notice prescribes alternate attire.

## LADIES GENERAL DRESS REGULATIONS

### Golf Course:

Neat tailored golfing attire must be worn on the course. Blouses and shirts must be tucked into the waistband of slacks, shorts and skirts, unless they are tailored or specifically designed to be worn out to hip length. Blouses or shirts must have a collar. Golf shoes with metal spikes are **not** permitted on the course.

### Clubhouse:

Tailored shorts may be worn in the luncheon room. Neat casual dress is permitted in the dining room and the bar, unless otherwise specified. Clean golf shoes may be worn in the Clubhouse except for the dining areas.

**UNACCEPTABLE CLOTHING** - for both sexes includes (but is not limited to):

- Trousers with draw string or elastic waists, jeans, studded pants, track suits, baggy pants, denim, leisure suits (including parachute silk), cargo shorts, brief shorts, stirrup pants, leggings, tank tops.
- Slacks tucked into socks or rolled up and clothing in a state of disrepair.
- Non-golf shoes whilst playing golf, sneakers or sports shoes.

## ETIQUETTE CODE

**All Members and guests will be cordially greeted, commensurate with the expectations and tradition of Huntingdale Golf Club**

### Course

- Players are requested to be ready 10 minutes before the scheduled tee time.
- Walk quickly between shots and call faster players through, remember your position in the field is immediately behind the players in front, not merely in front of the players behind.
- While a Member of the group is searching for a lost ball, the other Members of the group should play their shots.
- Sand buckets must be carried at all times and divots repaired, including those in the rough.
- Before leaving a bunker, repair the sand with the rake provided and replace the rake in the centre of the bunker.
- Carefully repair any ball marks made on the green.
- Course staff have right of way. Proceed with caution.

**Note: For further details refer to the Members Programme Booklet.**

### Clubhouse:

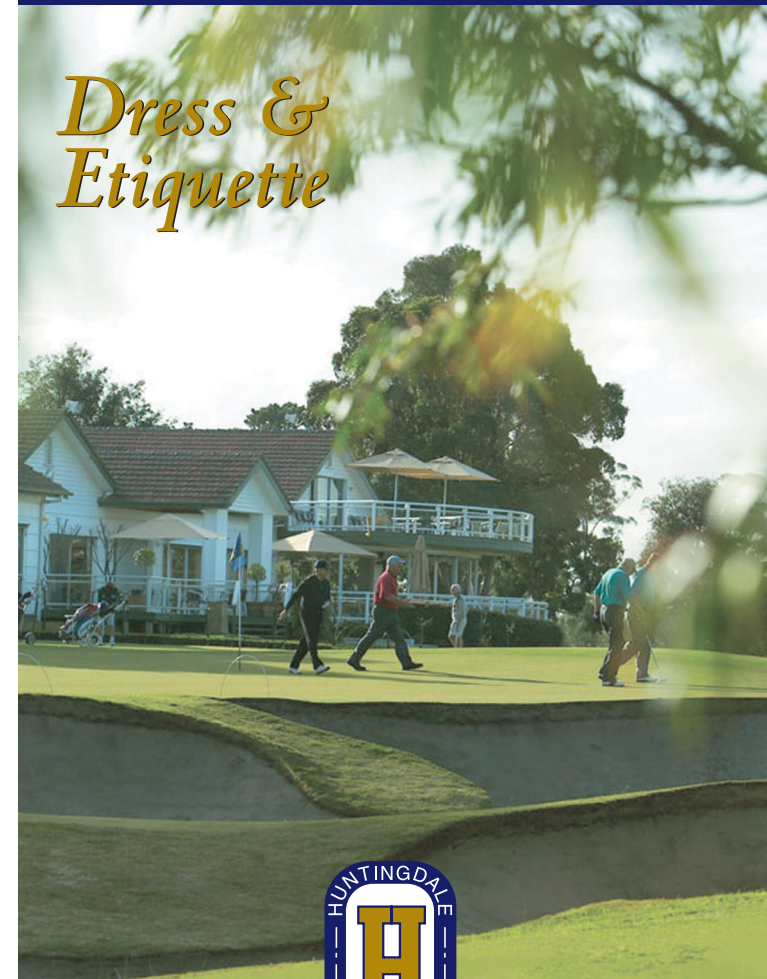
- Smoking is not permitted in the Clubhouse.
- Huntingdale Golf Club complies with the Responsible Service of Alcohol Practices.

### Mobile Phones:

- Prohibited in the clubhouse and on the golf course.

# HUNTINGDALE GOLF CLUB

## Dress & Etiquette



Windsor Avenue South Oakleigh Victoria Australia 3167  
Telephone 03 9579 4622 Facsimile 03 9579 3280  
Professional Shop Telephone 03 9570 4133  
Email [info@huntingdalegolf.com.au](mailto:info@huntingdalegolf.com.au)  
Web Site [www.huntingdalegolf.com.au](http://www.huntingdalegolf.com.au)

# TROUSERS

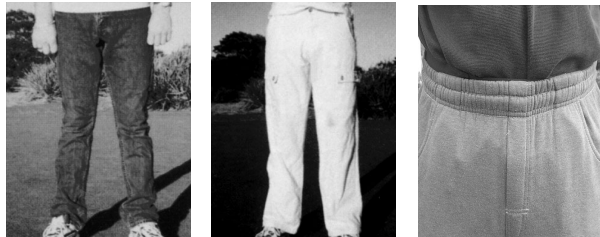
## ACCEPTABLE



PANTS

PLUS FOURS

## UNACCEPTABLE



DENIM/JEANS

CARGO

ELASTIC WAIST

# SHIRTS

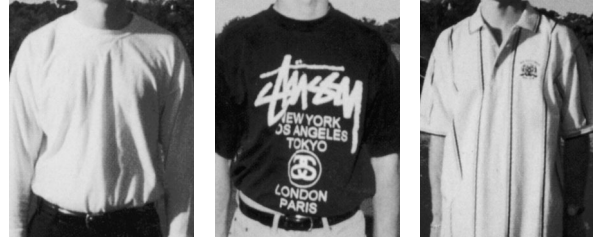
## ACCEPTABLE



COLLAR

SKIVVY

## UNACCEPTABLE



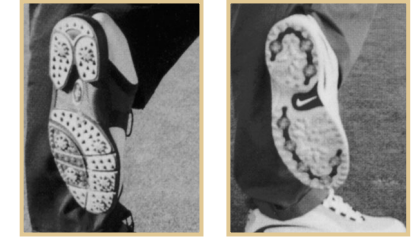
NO COLLAR

EXCESSIVE LOGO

HANGING OUT

# COURSE - SHOES & ACCESSORIES

## ACCEPTABLE



SOFT SPIKE

SPORT - GOLF SHOE

## UNACCEPTABLE



JOGGERS

CASUAL

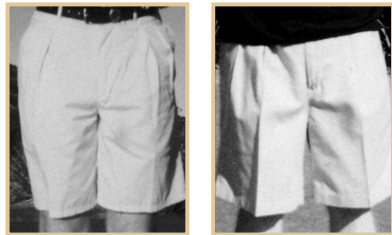
METAL SPIKE

CAP BACK TO FRONT

MOBILE PHONE

# SHORTS

## ACCEPTABLE



TAILORED

CUFFED SHORTS

## UNACCEPTABLE



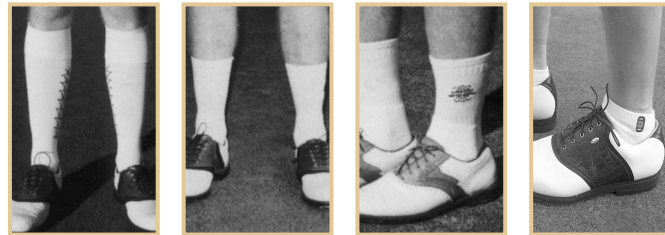
CARGO

TOO LONG

TOO SHORT

# SOCKS

## ACCEPTABLE



LONG

PLAIN WHITE

GOLF CLUB LOGO

ANKLET SOCKS

## UNACCEPTABLE



PUSHED DOWN

STRIPED

COLOURED

SOCKETTES

# CLUBHOUSE - SHOES & ACCESSORIES

## ACCEPTABLE



SOFT SPIKE

CASUAL

SPORT - GOLF SHOE

## UNACCEPTABLE



METAL SPIKE

JOGGERS

CAP

MOBILE PHONE